

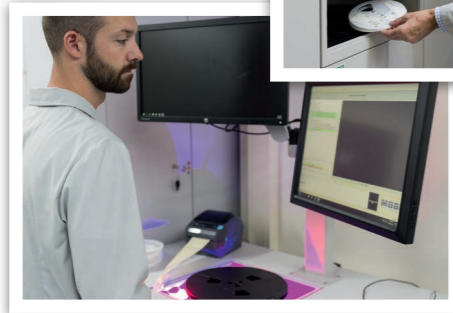


NETHERLANDS



“Industry 4.0 for us is all about information and knowledge and bringing the knowledge to the line to become operator independent.”

– Jochem Winkelmann,
General Manager –



Remote support with smart glasses



RENA Electronica B.V. in Zundert, Netherlands

RENA is known as a European competence center of customized LED light engines for demanding applications in amongst others architecture, oil and gas production, entertainment and horticulture. The company acts as a one stop shop for combined engineering and manufacturing of high-quality controls and industrial electronics.

Key Facts

- > High-mix/low-volume production
- > Approx. 10 setup changeovers per day
- > Up to 10 prototypes and new product introductions per week
- > All LED solutions are produced on a single SMT line
- > 120 employees, including 20 development engineers
- > 3-shift operation

Focus

- > Material management incl. LED binning
- > Process improvements for new product introductions
- > Sustained quality improvements
- > Remote support for line staff

Results/KPIs

- > Transparent, paperless material management
 - Automated import of supplier information from the labels
 - Label printing with UID for each package
 - Complete tracking of LED bin data in the system
 - Automated material issue next to the line
- > Zero downtime during New Product Introductions (NPIs)
 - Offline generation of printing and placement programs
 - Virtual printing and placement
 - Expert system for autonomous process optimization
- > Remote support for line staff (data glasses, mobile devices)
 - Operator guidance and fewer line stops, faster troubleshooting
- > 90% yield improvement
- > Increased throughput: SMT line is four times as fast as before

Scan the QR code to view videos with detailed insights into RENA's processes

